



FANS

MINE VENTILATION



ZVVZ MACHINERY
Member of ZVVZ GROUP

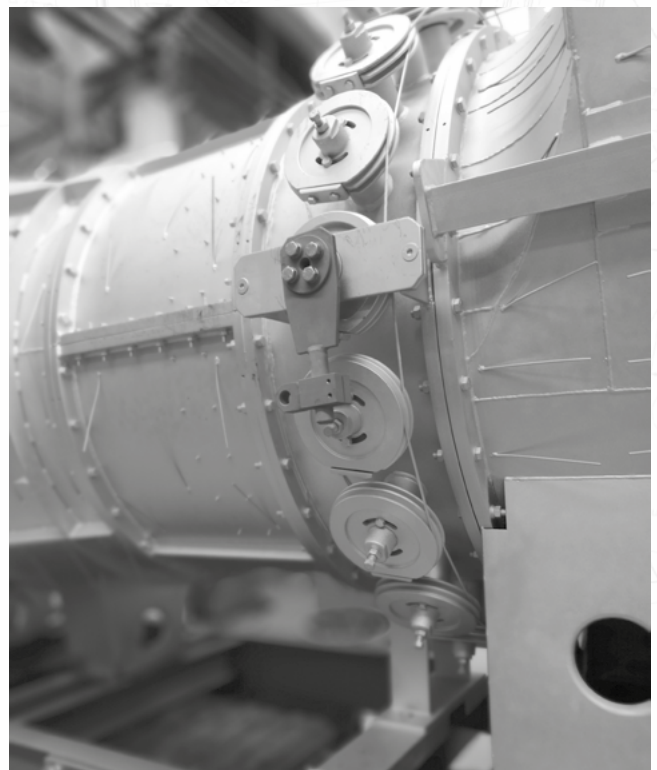


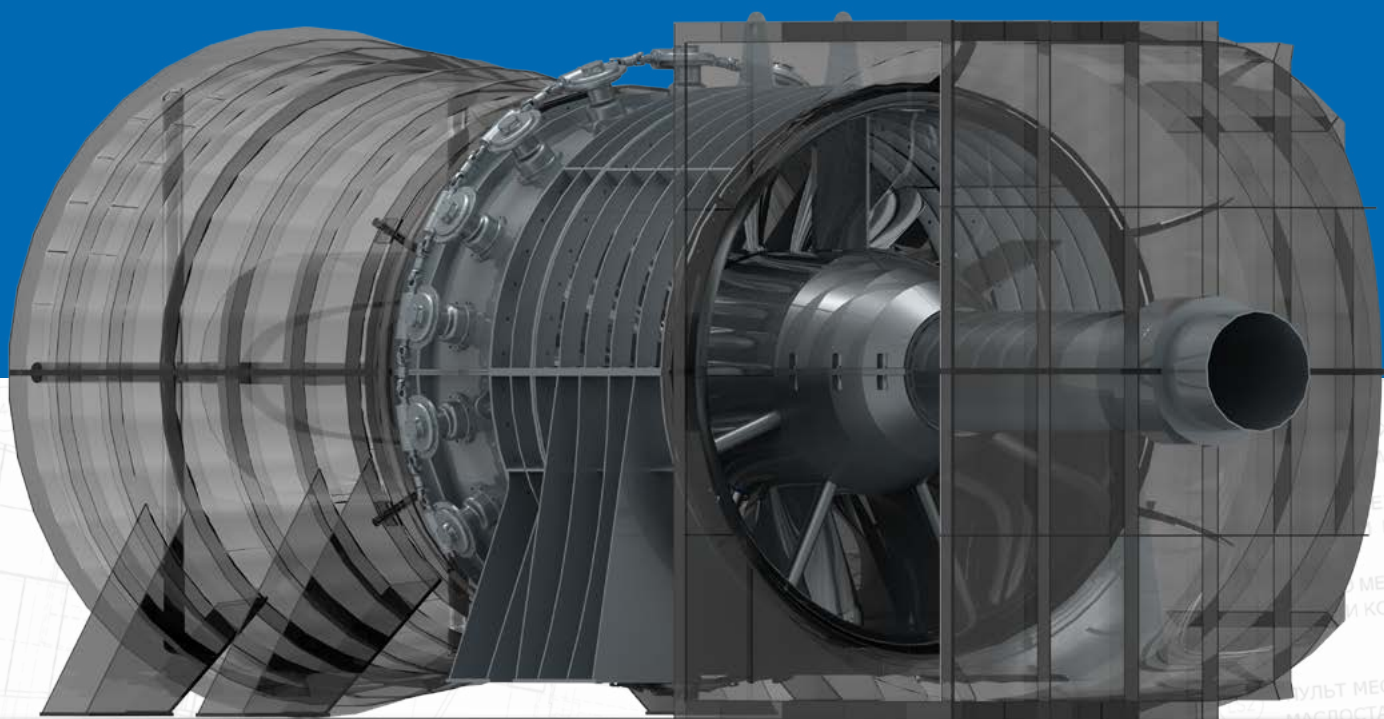
MINE VENTILATION IS THE DOMAIN OF AXIAL FANS. THEY PROVIDE MINERS IN THE MINES WITH A LARGE FLOW OF FRESH AIR

WITH THE DEVELOPMENT OF UNDERGROUND MINING ENGINEERING, IT IS NOW IMPOSSIBLE TO DO WITHOUT 100% RELIABLE VENTILATION SYSTEMS BECAUSE THE LIVES AND SAFETY OF PEOPLE WORKING BELOW THE EARTH'S SURFACE DEPEND ON THEM.

Reliable operation of the fan is therefore the most important criterion that is closely monitored throughout the life of the fan, i.e. from its careful design in consultation with both the customer with specific requirements and leading mining engineering experts, through strict quality control of production, to precise installation and operational service.

Since the very beginning of the production of mine ventilation fans, ZVVZ has been cooperating with the Scientific Coal Research Institute in Ostrava - Radvanice, which, among other things, has been addressing and controlling safety measures in mines for more than sixty years.





As a result, ZVVZ mine fans meet all the demanding requirements for reliable mine ventilation and gas mines and have all the necessary certificates. In this respect, our axial fans are unsurpassed in their reliability due to their simplicity of design, low maintenance and, above all, the fact that the principle of operation of the fan impeller makes it easy to ensure that it is explosion-proof.



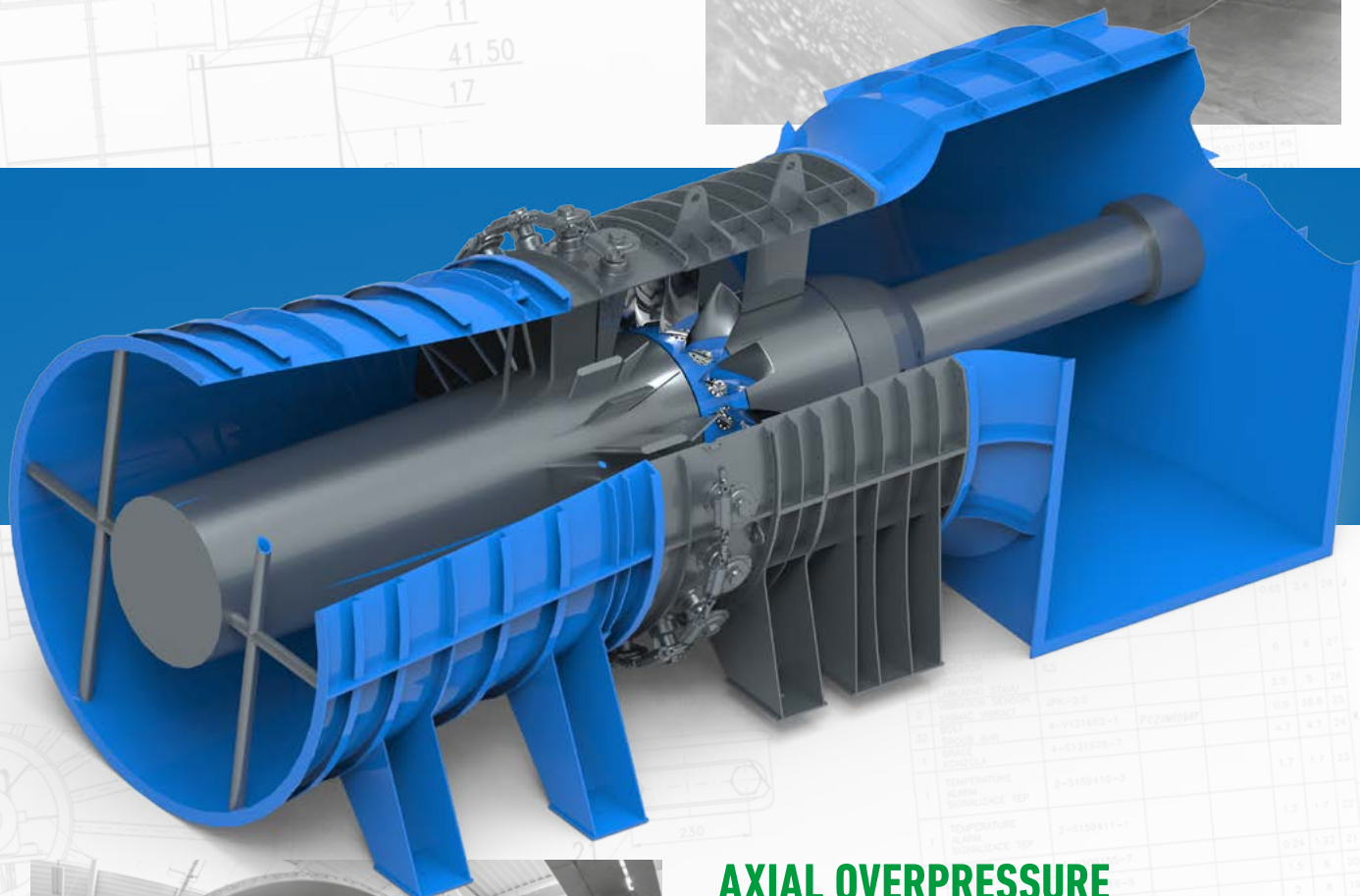
AXIAL OVERPRESSURE REVERSIBLE FANS

REVERSIBLE FANS FOR MINE VENTILATION ARE A STORY OF ITS OWN, REPRESENTING A SOPHISTICATED TECHNICAL SOLUTION TO MEET DEMANDING AIR HANDLING REQUIREMENTS AND ARE THE DOMAIN OF AXIAL OVERPRESSURE FANS.



- › Extensive work area of high efficiency
- › Reliable operation even at low power
- › Operational reliability
- › Alternative materials of rotor blades

Since its foundation, ZVVZ has been committed to safety and reliability in the operation of these fans and has focused on developing a machine that can meet air handling requirements without the use of complex rotating mechanisms that require careful, often demanding maintenance. ZVVZ thus built on the experience of leading experts in the field of mine ventilation and relied on the proven method of reversing by changing the sense of rotation of the impeller and reversing the stator blades.



AXIAL OVERPRESSURE REVERSIBLE FANS



COMMON SIZES

1,000 mm to 5,000 mm



REVERSIBLE OPTION

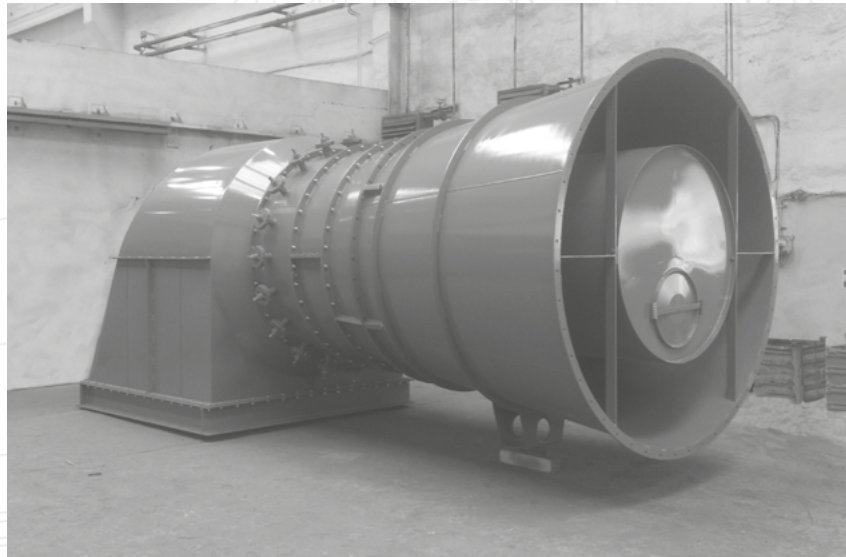


STANDARD TEMPERATURE OF AIR MASS
up to +200 °C



EXPLOSION-PROOF DESIGN

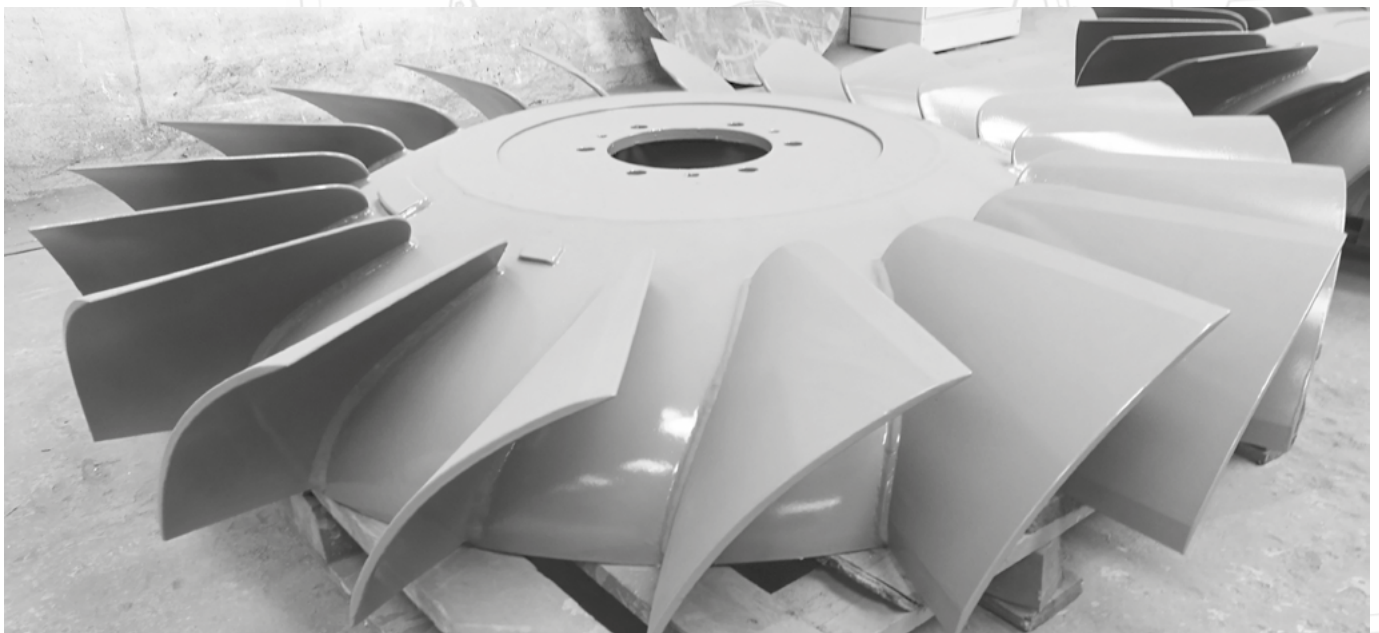


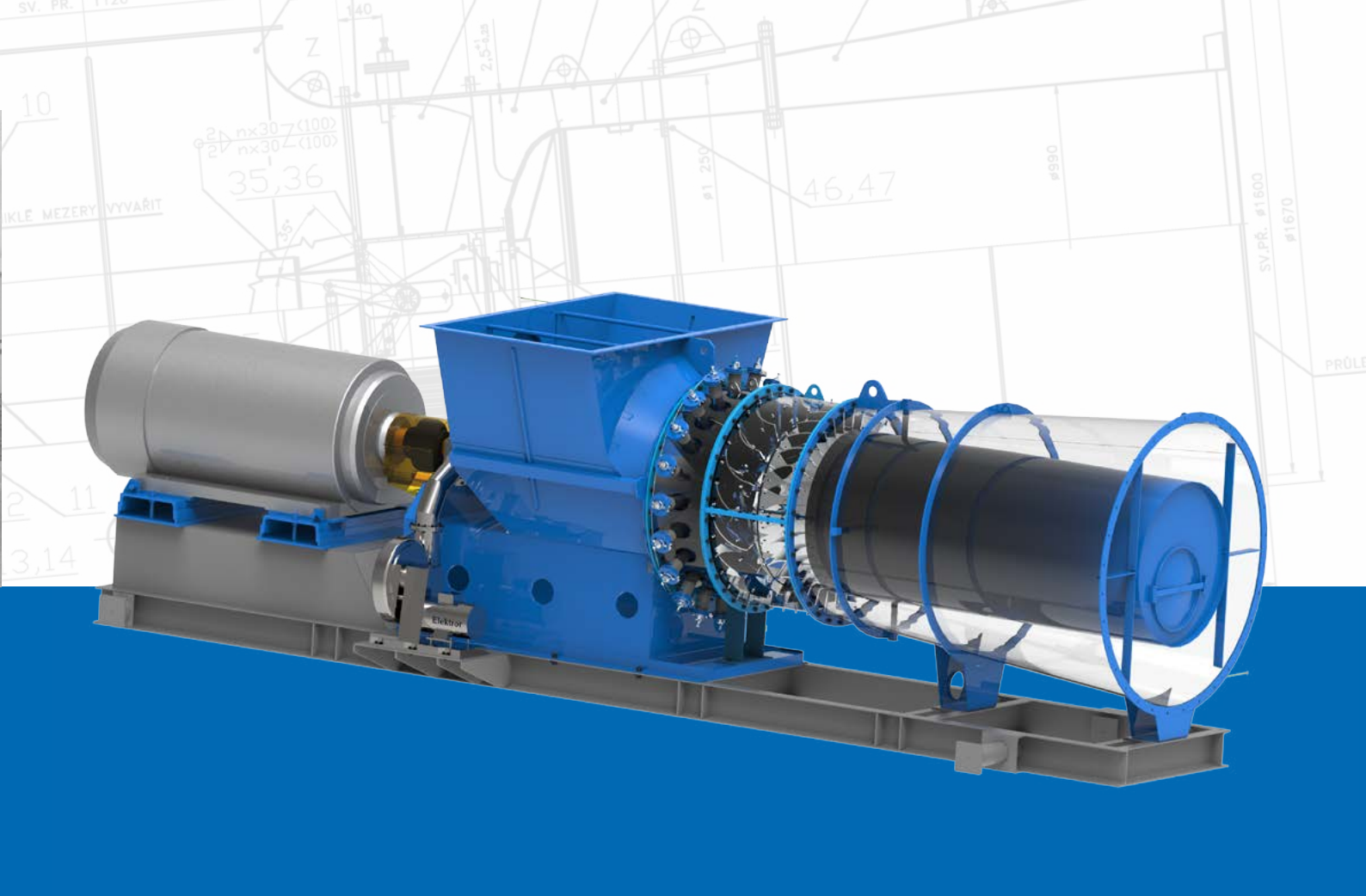


AXIAL MIXED FLOW FANS

TRADITIONAL AND RELIABLE MACHINES SUPPLIED BY ZVVZ FOR MANY DECADES, WHICH ARE CONSTANTLY UNDERGOING MODERNISATION AND ARE THEREFORE STILL USED IN TODAY'S OPERATIONS.

- Huge air conditioning performance, high efficiency
- High reliability
- Low maintenance
- Low purchase costs
- Regulation of air conditioning performance is possible aerodynamically or using FC





AXIAL MIXED FLOW FANS



COMMON SIZES:
710 to 4,500 mm in a range
of selected R20 numbers



**STANDARD TEMPERATURE OF
TRANSPORTED AIR MASS up to +250°C**



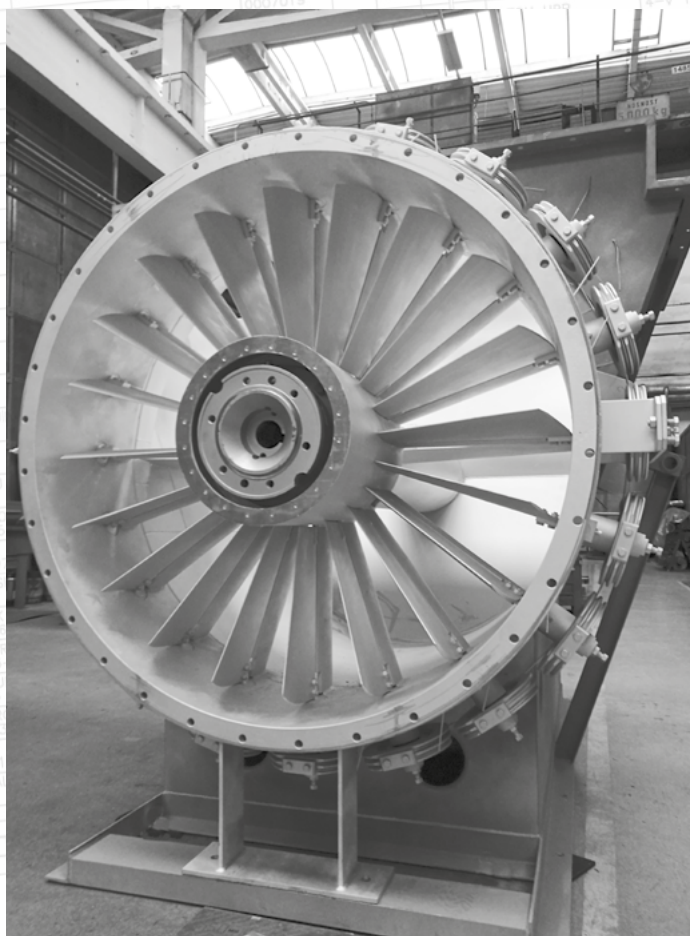
MAINTENANCE-FREE



EXPLOSION-PROOF DESIGN



AERODYNAMIC CONTROL





+ 10,000
machines supplied



30
Countries



More than
70 years
of tradition



ZVVZ MACHINERY, a.s.



Sažínova 888, Milevsko, 399 01



fans@zvvz.cz



+420 382 551 111



www.zvvz.cz



ZVVZ MACHINERY
Member of ZVVZ GROUP